

Compact geared motors for Track Drives

The geared motors shown herebelow are specifically designed for small tracked or wheeled machines. These units consist of gearbox, brake, and built in motor, with motion control valve. They are generally used in open hydraulic circuit.

Two different solutions are represented herebelow:

- 1) with fixed displacement orbital motor
- 2) with axial piston motor - two - displacements.

The units with orbital motor can be supplied also:

- 1) without brake, with motion control valve
- 2) without valve (only for closed circuit).

Stages	Type	Motor	Mass of the machine	T2max	Disp.chan. pressure	Speed Ratio	Motor oil flow	Motor max. displacem.	Max. pressure	Ratios
n°			[tons.]	[Nm]	[bar]	[n°]	[lt/1']	[cm³]	[bar]	1:
1	CTM1009	BRZV	1,2	1100	--	--	60	50 ÷ 100	170	5
1	CTM1016	BRZV	1,5	1300	--	--	60	50 ÷ 160	150	6,09
1	CTM1022	HPRM	2,5	2200	--	--	60	80 ÷ 160	210	6,09
2	CTM2025	H4VR18	2,5	2800	15 ÷ 70	1,67	36	18	210	36,6 ÷ 52,5
2	CTM2035	H4VR27	4	4000	20 ÷ 30	1,96	50	26,3	320	35 ÷ 53
2	CTM2055	H4VR33	5	6000	20 ÷ 30	1,78	60	33,8	320	38,2 ÷ 49,5

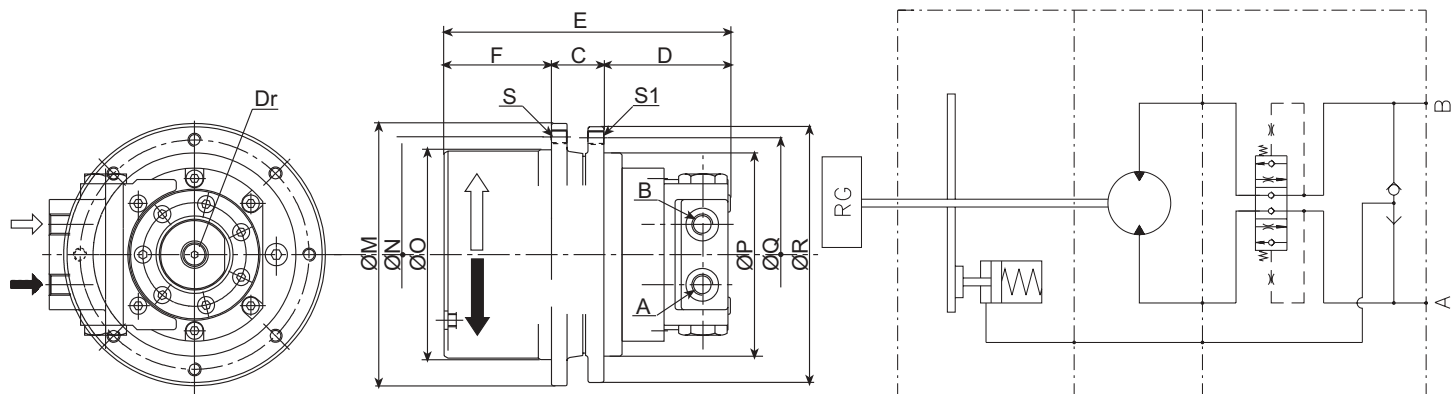
TABLE OF DIMENSIONS

Tipo	E	F	C	D	M	N	O	P	Q	R	S	S1	A	B	Pg	Dr	Vr
CTM1009	214,5	72,5	45	97	Ø175	Ø155	Ø140h8	Ø155h8	Ø175	Ø195	M10x1,5 n° 9	M10x1,5 n° 8	3/8"	3/8"			
CTM1016	215,5	82	40	97	Ø200	Ø180	Ø160h8	Ø155h8	Ø175	Ø195	M10x1,5 n° 8	M10x1,5 n° 8	3/8"	3/8"			
CTM1022	257*	104	40	113*	Ø240	Ø215	Ø190h8	Ø165h8	Ø192	Ø215	M12x1,75 n° 9	M12x1,75 n° 9	1/2**	1/2**	M10x1	1/8"	
CTM2025	247,5	120	50	77,5	Ø240	Ø215	Ø190h8	Ø165h8	Ø192	Ø215	M12x1,75 n° 9	M12x1,75 n° 9	3/8**	3/8**	1/8**	1/4**	1/4**
CTM2035	280	133	70	103,5	Ø256	Ø232	Ø240h8	Ø165h8	Ø192	Ø215	M12x1,75 n° 9	M12x1,75 n° 9	1/2**	1/2**		1/4"	1/4**
CTM2055	319	142,5	68	108,5	Ø286	Ø262	Ø230h8	Ø200h8	Ø240	Ø264	M14x2 n° 9	M14x2 n° 9	1/2**	1/2**		1/4**	1/4**

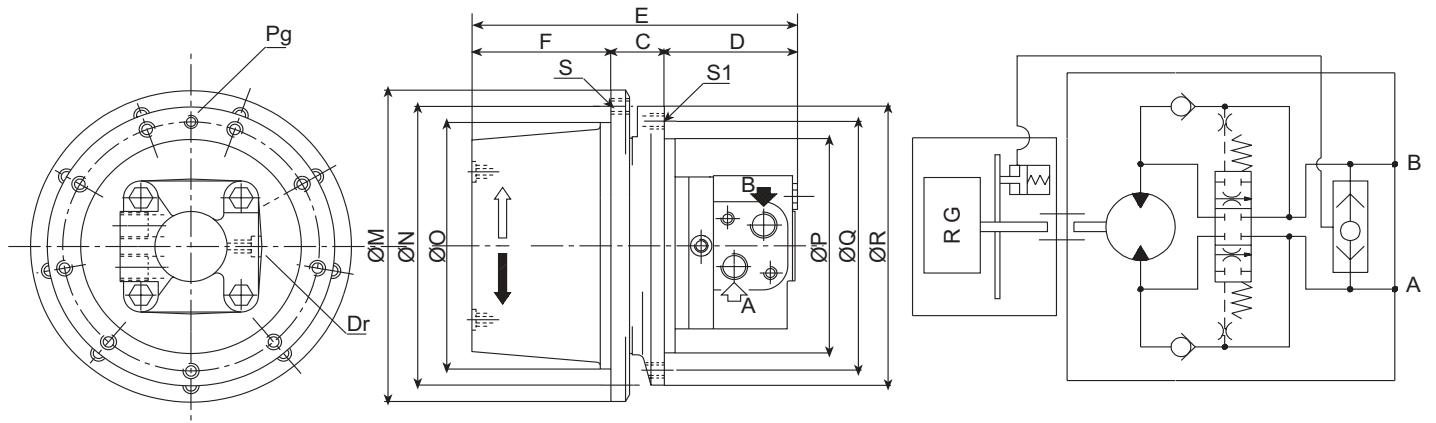
(•) G-type thread (⌘) JIS B2351 type thread

(*) dimension with motor max. displacement

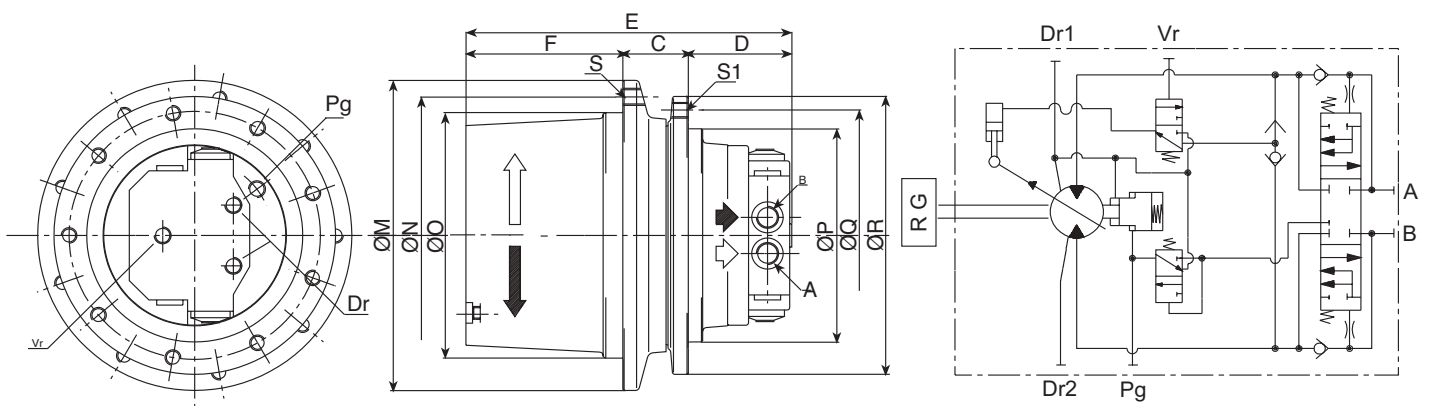
CTM1009/CF
CTM1016/CF



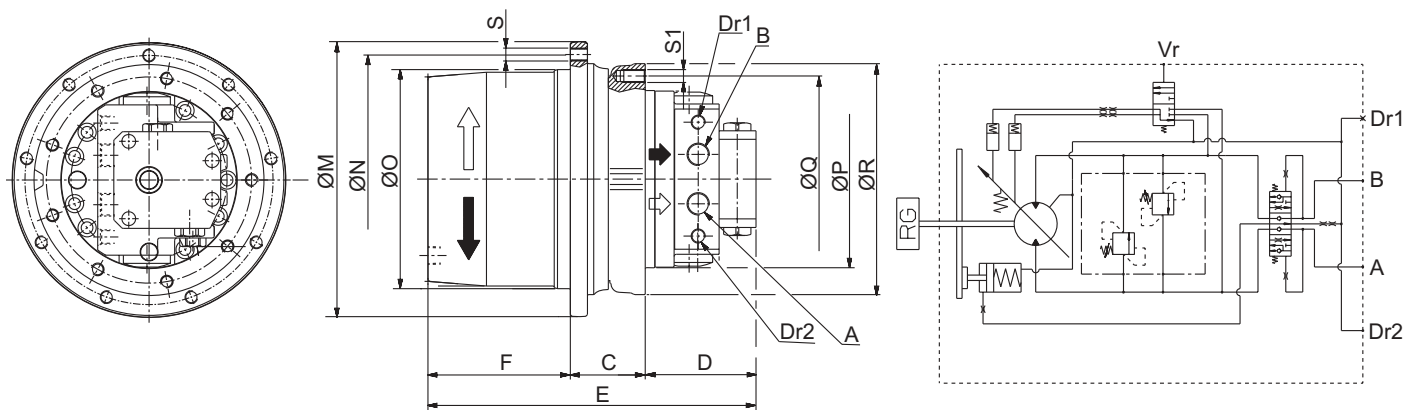
CTM1022/CF



CTM2025/CF



CTM2035/CF



CTM2055/CF

